

2019 Truckee Meadows Regional Plan Update



MAPPING OUR FUTURE



Draft Plan

ENGAGEMENT

- Regional Issues Survey
- Regional Concerns Survey
- Quality of Life Survey
- Anticipated: Community Conversation

ENGAGEMENT

- Scenarios Survey
- Food for Thought
- Community Conversation

Scenario Planning



Policy Evaluation & Development

ENGAGEMENT

- Vision and Directional Statements Survey
- Roadshows



Supportive Efforts

Foundational Work



Key Overall Changes



Overall plan structure and look



Inclusion of scenario planning as tool to:

Elicit engagement to understand desired vision
understand implications of choices

Data-driven annual reporting



Cleaning up of policies:

Eliminate redundancies and reduce the number of policies

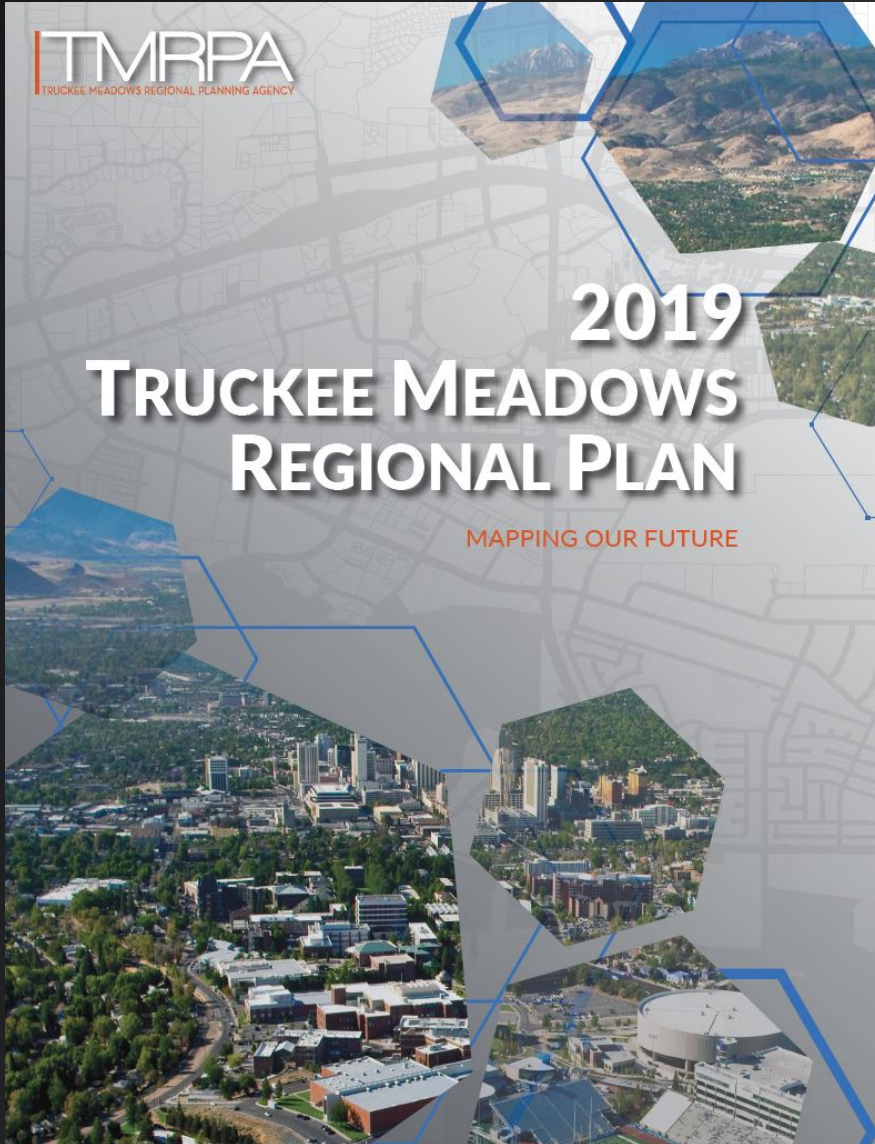
Make the plan more implementable

Focus on regional policies

Embed back in NRS

NRS 278.0274

- Population projections
- Limit premature expansion and direct growth to established areas
- Conserve natural resources
- Efficient public facility and service provision
- Intergovernmental Coordination



Introduction

Chapter 1: Setting the Stage

Population and Development

Chapter 2: Regional Vision for Growth

Scenario Metrics

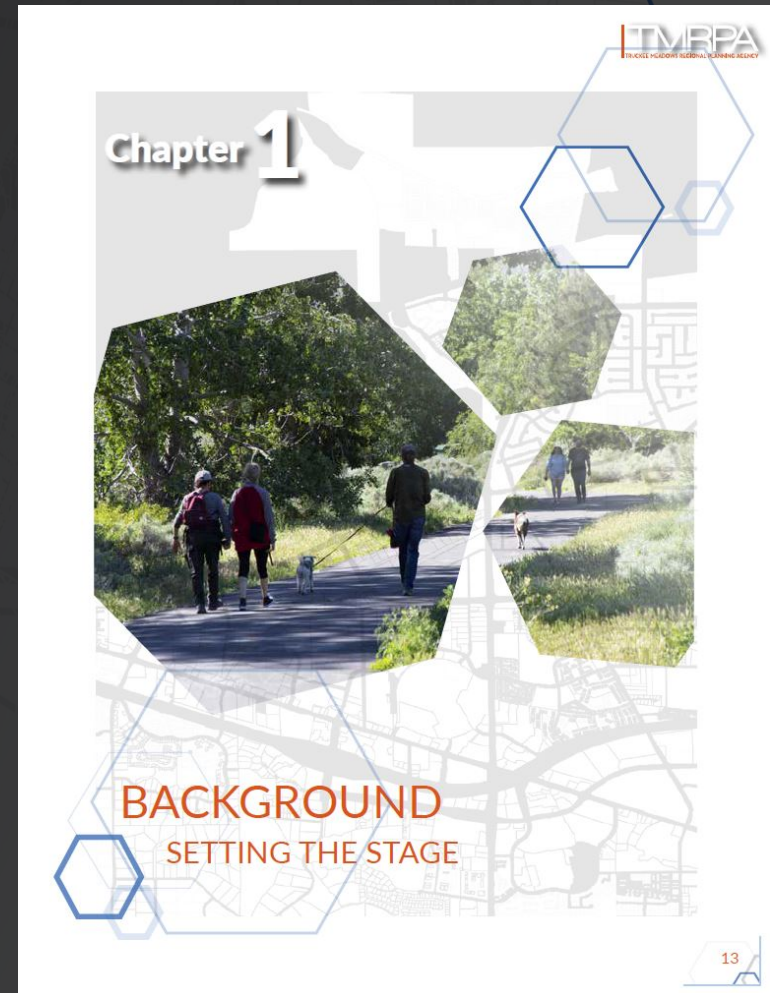
Chapter 3: Implementation of the Regional Vision

Moving Forward

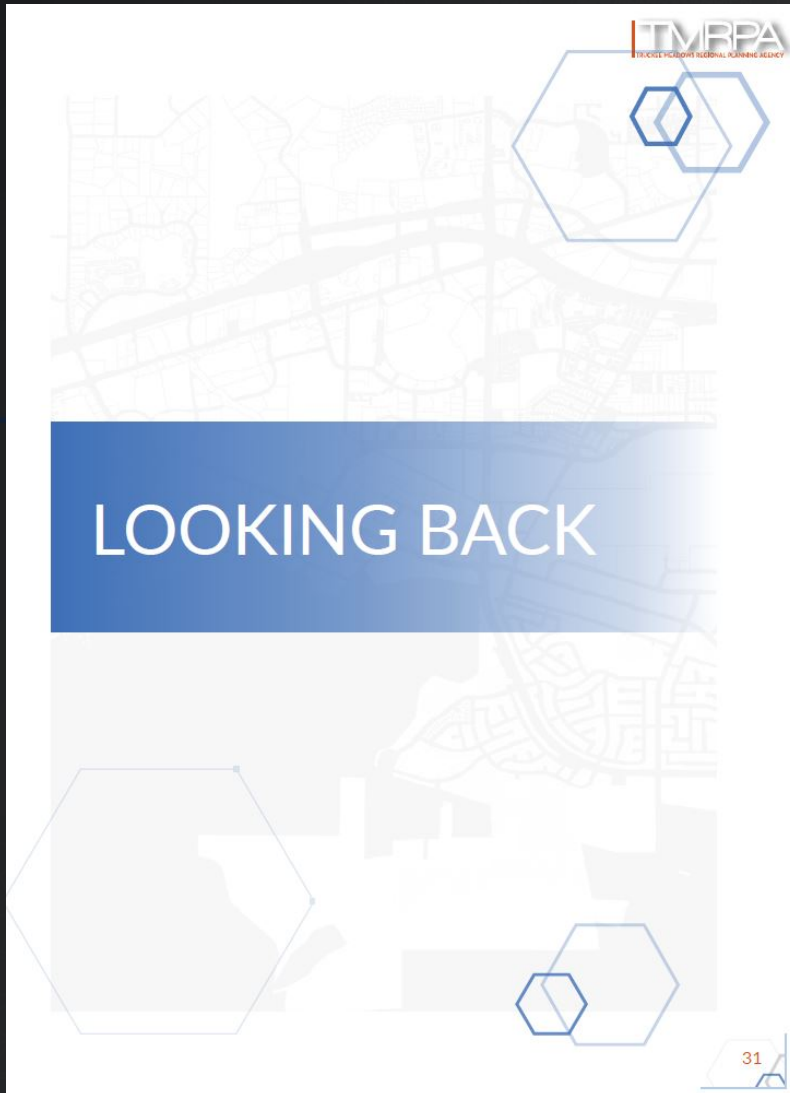
Appendices

Chapter 1: Setting the Stage

- Regional Planning in the Truckee Meadows
 - Who is TMRPA?
 - Roles and Responsibilities
- The Regional Plan
 - What is it?
 - Development of this plan



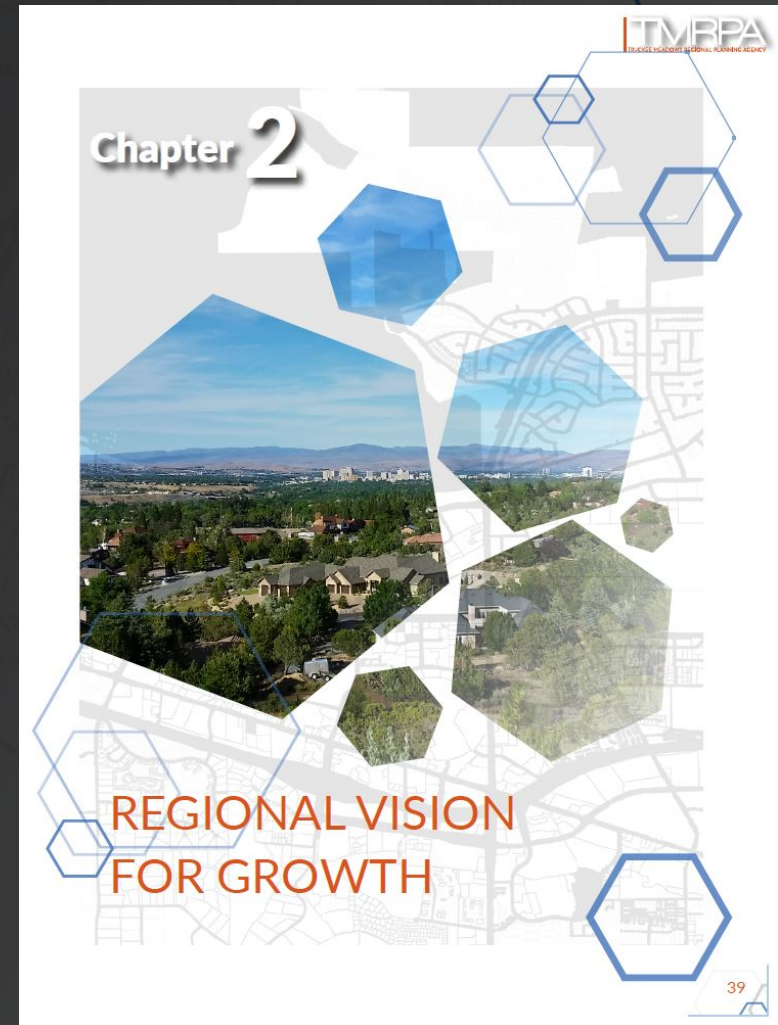
Looking Back



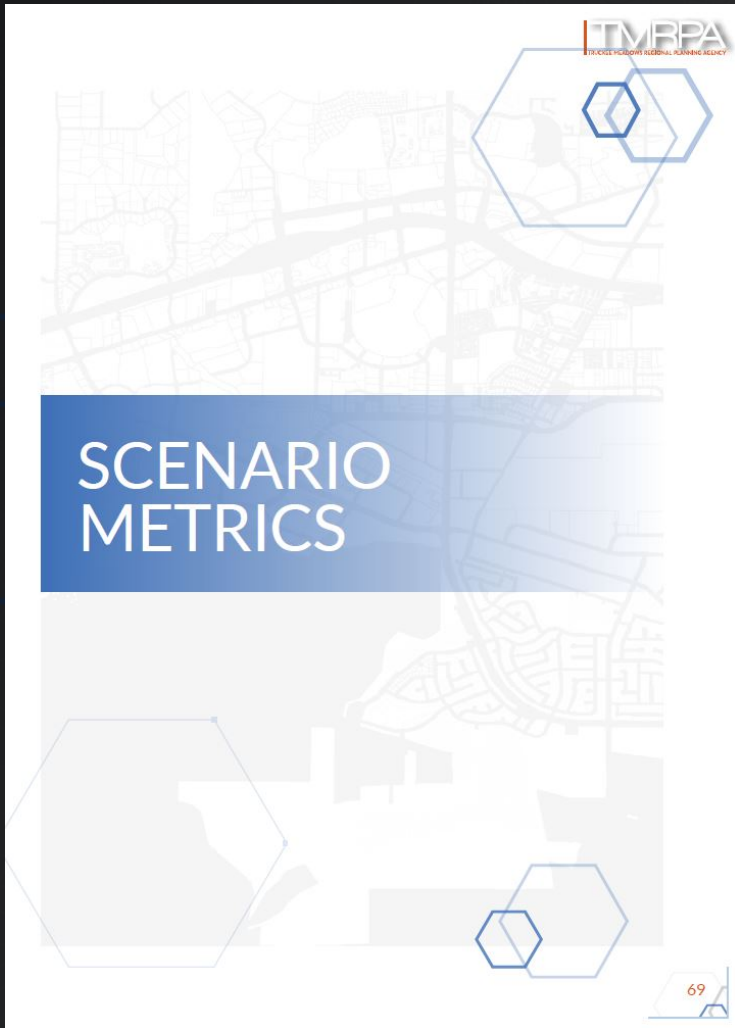
- Storytelling
- History of development

Chapter 2: Regional Vision for Growth

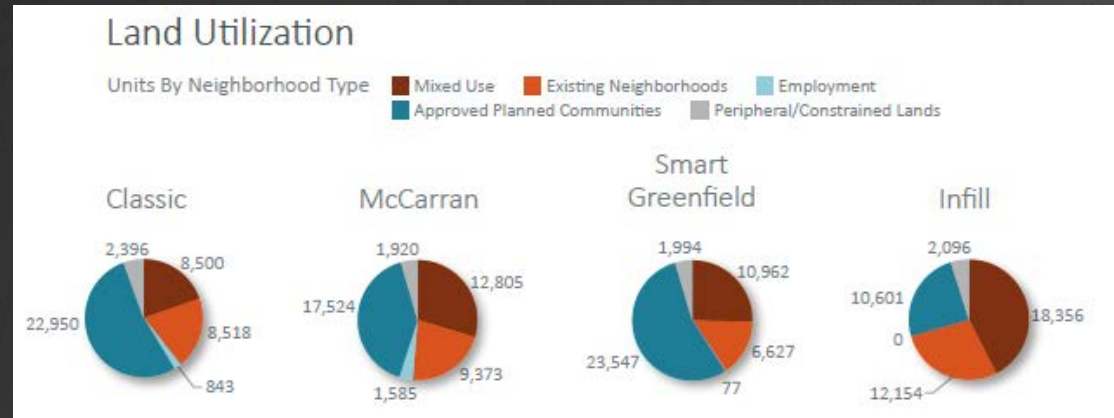
- Regional Goals
- Scenario Planning
 - Development
 - Results
 - Evaluation
- Regional Form map



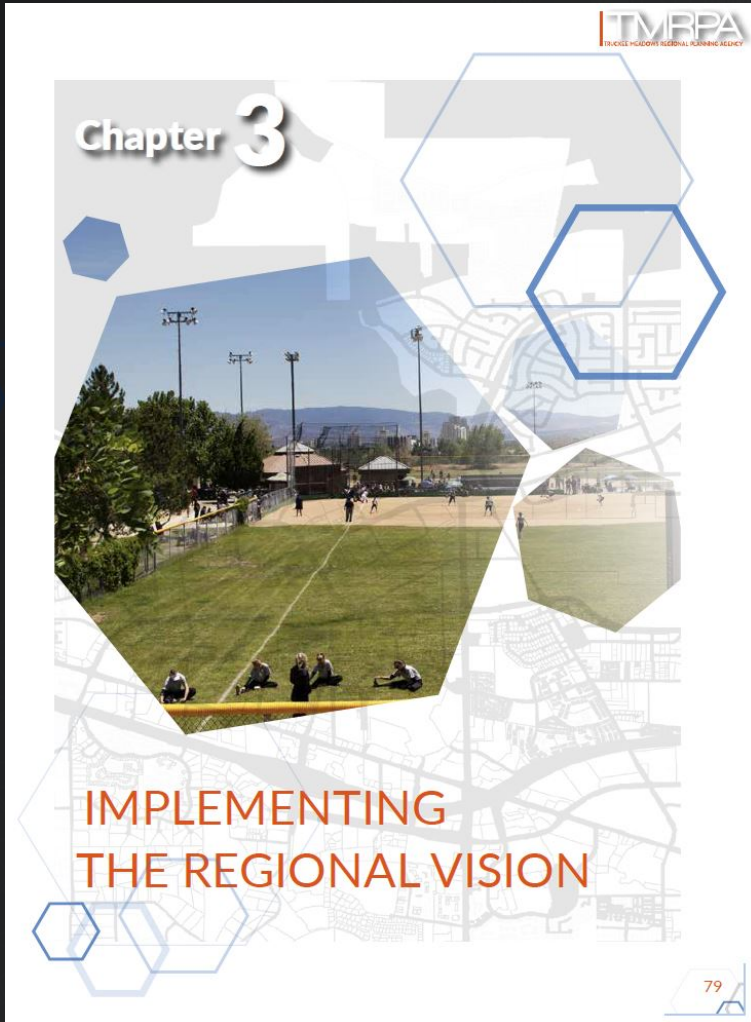
Scenario Metrics



- Scenario Planning Outcomes
 - Data
 - Metrics



Chapter 3: Implementation of the Regional Vision



Policy Elements

-  Population Growth (PG)
-  Regional Form (RF)
-  Public Facilities/Services (PF)
-  Natural Resources (NR)
-  Regional Coordination (RC)

Key Policy Concepts

Consensus Forecast

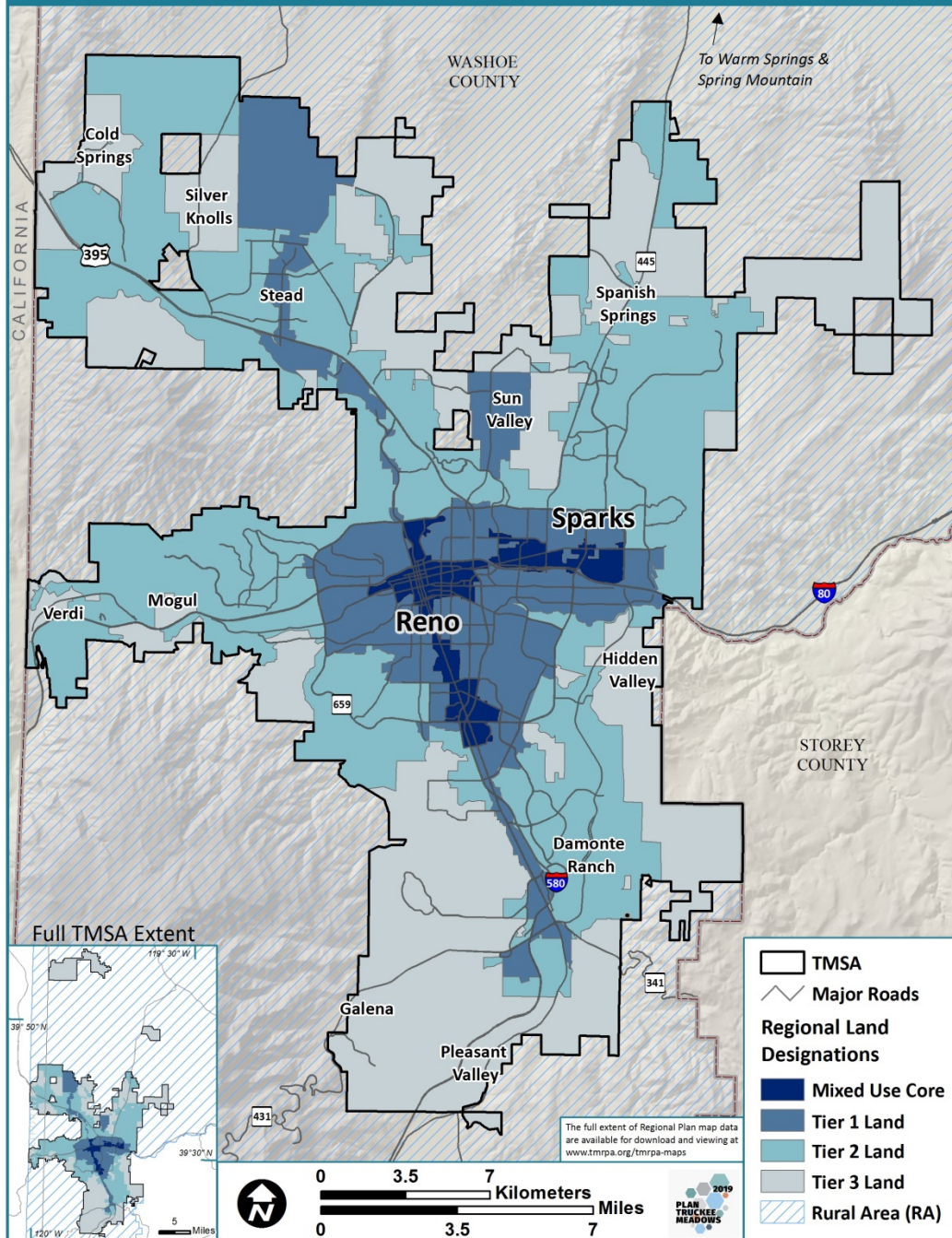
- Included into the Plan instead of separate document
- Provides more clarity on jurisdictional splits and disaggregation

Tiering

- Introduction of Regional Land Uses and the concept of tiering
- Refinement of the TMSA

MAP 2 - REGIONAL FORM

TMRPA



Key Policy Concepts

Refined Public Facility/Service Provision

- Replacement of concurrency management system policies with a list and standards of facilities and services
- Work Plan item to jointly develop a Public Infrastructure Investment Plan

Public Infrastructure Investment Plan (PIIP)

- The creation of the Public Infrastructure Investment Plan to help coordinate public facility and service planning

Key Policy Concepts

Natural Resources Plan

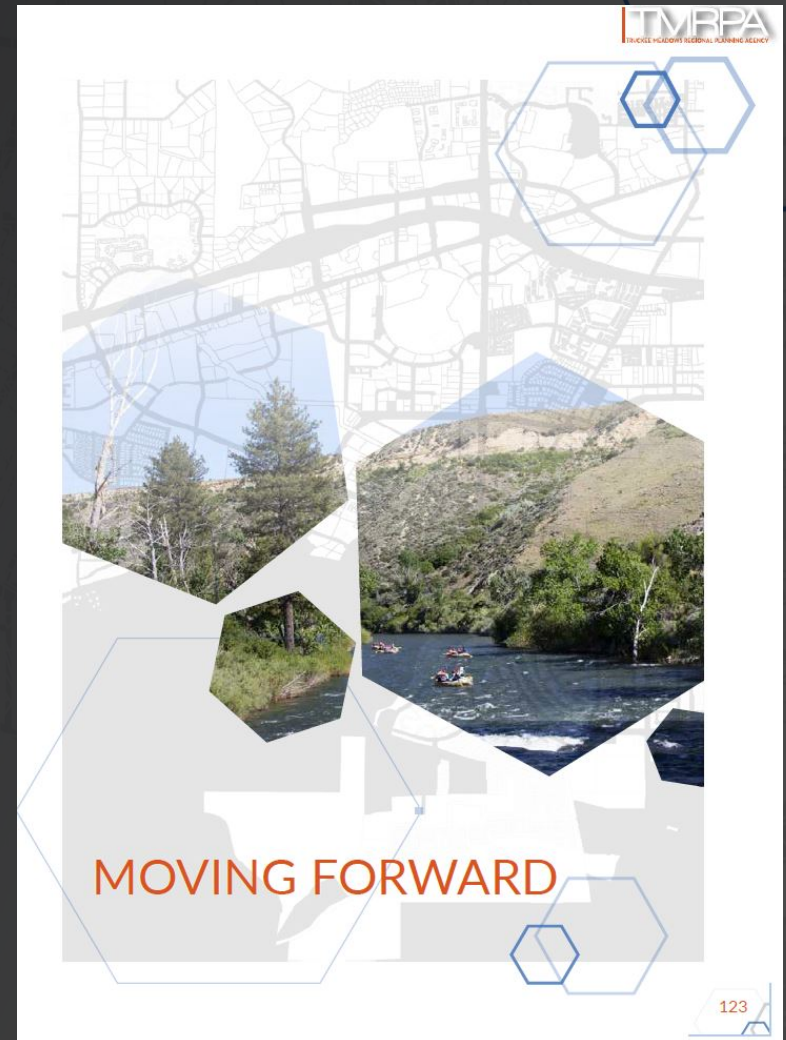
- Will help refine natural resources policies
- Map of natural resource areas

Truckee Meadows Annual Report

- Will allow the agency to use, track, and analyze data more frequently in all of the work that we do

Moving Forward

- Discussion about the wider region
- Call to action as a Region



Appendix Material



- Definitions
- PRS Guidelines (RPC Resolution)
- Consensus Forecast

Call Out Boxes

- Quotes
- Engagement
- Other references

Infrastructure
was the top Regional
Concern of the first
Regional Plan
update survey!

CLIMATE CHANGE SCENARRATIVE



The Truckee Meadows Regional Plan's planning horizon is 20 years, however this does not mean that the Regional Plan has not considered the timeframe beyond that horizon. In fact, TMRPA hired Environmental Management and Planning Solutions, Inc. (EMPSI) to create a climate change scenario narrative or "scenarrative" to look at the long-range impacts of climate change and what measures can be taken in the near term to help mitigate those impacts.

The Climate Change Scenarrative identifies that the climate of the future is predicted to have higher temperatures and that precipitation patterns and types will likely shift. This may contribute to higher evaporation rates, overall drier conditions with intervals of heavy precipitation and less predictable snowmelts. This future climate poses many threats to the Region's Quality of Life in the Truckee Meadows including more frequent and intense floods and droughts, fluctuation to water sources, and increased risk of wildfires.

The scenarrative points out that there are many regional implications to the Truckee Meadows' natural resources, open space, and built environment as a result of these changing conditions however the extent, timing, and exact nature of these implications are unknown. The Regional Plan attempts to mitigate many of the impacts expected from climate change by incorporating policy opportunities identified by the scenarrative and will continue to work with our Regional Partners, such as the Truckee Meadows Water Authority to enhance the Region's resiliency.

**For a more thorough understanding of the impacts of climate change on our region, please see the supporting document, Truckee Meadows Regional Plan Narrative: Climate Change.*



The Natural Environment was recognized as a priority in all of our surveys!

Next Steps

- Review of the draft plan
 - Regional Planning Commission
 - Regional Planning Governing Board
 - Stakeholders
 - Public
- September: finish review and final adoption

Questions and Feedback